

Kippy Hammond Studios  
PORTRAITS AND LANDSCAPES IN OIL AND PASTEL



## Portrait Basics Workshop

*Kippy Hammond* PSA SPS

September 13 –27, 2009

La Bonne Etoile Artist Retreat

Fontaine Fourches FRANCE

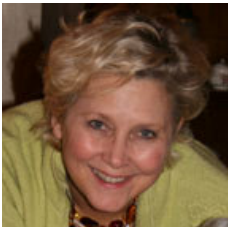
*This workshop is the first of its kind and spaces will be reserved until April 13, 2009 for returning guests of La Bonne Etoile.*

The two weeks will include a five-day workshop format, repeated twice. Working from a live model, instructional sessions will cover posing and lighting the model, basic drawing of the head and figure, achieving beautiful flesh tones and composing portraits. After opening demonstrations by Ms Hammond, students will work from a live model with morning sessions being focused on the head and afternoon sessions for the full figure. Additional discussions and lectures will include: building a career in portraiture, building a clientele, and maintaining professional standards.

*Students do not need experience in portraiture but should have intermediate level skills in drawing. If your drawing skills need to be improved, early enrollment will permit Ms Hammond to mentor you on how you can raise your level of drawing in preparation for the workshop. Students may work in any medium, but should have basic knowledge of at least one medium.*

The artist graduated with a BFA in Visual Arts from the University of Georgia. She followed other pursuits until 1986 when she returned to the studio. While maintaining a private studio she continued studying pastel and oil portraiture with many outstanding teachers.

Her work has been recognized in numerous exhibitions and solo shows receiving state, regional, and international awards. She is a signature member of the Pastel Society of America and the Southeastern Pastel Society..



Her teaching experience is extensive, including art education for middle school as a full time teacher and drawing for elementary students as an Artist in Residence with the Georgia Council of the Arts. Teaching with the Georgia Art Bus program that served remote locations of Georgia she also worked with professional teachers on teaching drawing in the classroom and incorporating it in various curriculums. As co-founder of the Hammond-Boyd Art School she taught all mediums for adults, middle school and high school students.

Presently living for the majority of the year in France, she continues to paint landscapes and commissioned portraits for clients in the United States and Europe. Ms. Hammond offers pastel exploration workshops in France and through art facilities in the United States.

Visit Ms Hammond's website to view her work and learn more about her [www.kippyhammond.com](http://www.kippyhammond.com)





To enhance your portrait workshop studies, the in-home and restaurant dinners, as well as all the excursions have been chosen to help you experience the local flavors of France that are not evident from a tour bus. This particular region of France, while a very big French tourism destination, isn't as highly visited by English speaking tourists, so, guides will be added to our group from time to time. The cities chosen are not so large that anyone who chooses to slip away and wander will not feel intimidated.

Whether you return to the states exhausted, having taken part in every class, excursion, and every extra minute in the studio or balance your stay with rest and relaxation as top priority, our hopes are that you leave La Bonne Etoile inspired. Inspired in your art and your spirit, having acquired new skills in creativity and foreign travel.

The all-inclusive land package price of **3200 Euros** covers the following:

14 nights of lodging

All meals and beverages, except lunch in Paris

All tuition for instruction with Kippy Hammond

All model fees

Unlimited studio time

En plein air excursions in the beautiful French countryside

Internet access and access to laundry facilities.

A host from La Bonne Etoile will accompany your group for the duration of your stay

All ground transportation costs, including airport transfers, excursions, and shuttles to lodging for off-site guests

**Supplies and air transportation not included.**

Just a few of the highlights and excursions include:

**Paris** - *This one-day excursion is to try and give you a few bearings and “land legs” for future trips to Paris and not an all-inclusive visit. .*

**Brocantiing** -*During the summer months, France’s countryside is filled with local festivals and small brocantes. These are a combination flea market/ garage sale/ festival with a mixture of local citizens and professional merchants. Going to the brocantes every weekend seems to be a French tradition; you will see Parisians out for the weekend and locals, all looking for the treasures to be found. This is a real treat that is always a hit with Americans though probably not on any tours.*

**Market Day** -*The weekly market in Bray-sur-Seine will be scheduled for those that would like to browse and take pictures. This particular market is a real treat, even for those familiar with European open-air markets.*

Please feel free to visit our website [www.labonneetoile.com](http://www.labonneetoile.com) and the director’s personal website [www.kippyhammond.com](http://www.kippyhammond.com) to get a great sense of the adventure that we are planning for you.



The region is rich with history and excursions can be added as desired by the group. Also, arriving early or departing late is an option, room and board to be based on 110 Euros per day with special add-on excursions planned in response to individual requests and available time. Here are a few options to consider:

**Provins-** *The ancient fortified city of Provins sits atop a ridge overlooking the Seine valley and the Champagne chalk lands, roughly equidistant from both Paris and Troyes. The town has a famous outline, dominated by a tower and the dome of Eglise St-Quiriace. Provins' role as an important center of commerce was confirmed in the 12C when it became one of the two capitals of the County of Champagne.*

**Troyes** *is a charming, medieval city. We will begin the day with a guided walking tour with an English-speaking tour guide. You have a choice to explore the numerous museums and churches in the ancient city or to sketch within helping distance of the instructor.*

**Sens** *This rather small town was important well before Caesar came to Gaul. The Cathedral St-Etienne is Sens' outstanding glory. Begun before 1140 it is the oldest of the great Gothic cathedrals and the attached museum houses the most outstanding Gallo-Roman collection in France.*

**Château de Vaux le Vicomte** - *This beautiful château is the precursor of Versailles and is a favorite of those that know French history. Rick Steves rates it in the top ten of the most underrated sites in Europe. We will continue our day to Moret sur Loing where Thomas Sisley painted and enjoy a dinner at La Palette, a wonderful restaurant.*

Plus the Champagne region with visits to the great champagne houses in Epernay and Reims, Vezelay, Joigny, Fontainebleau, Chartres, and more.

*Special notes concerning air transportation from the United States*

In making your air travel arrangements do remember that your **departure date from the states will be September 12, 2009 arriving at Charles De Gaulle Airport in Paris on September 13, 2009.**

Your departure date from CDG is September 27, 2009 arriving in the states on the same day.

All flights into CDG airport from the states arrive in the AM. Because we will be using a commercial bus company for your shuttle, we request that you try and schedule your arrival time approximately between 8:00 and 10:00 AM and your departure in the late morning or early afternoon.

**How do I make reservations?**

Contact us immediately via email to reserve your space, [khstudios@yahoo.com](mailto:khstudios@yahoo.com) OR [Kristina@labonneetoile.com](mailto:Kristina@labonneetoile.com)

A General Trip Agreement will be forwarded to you.

Fill in your personal information and sign

Include check or money order made payable to Kippy Hammond for \$1500.00

Mail the signed agreement and deposit to: Kippy Hammond, PO Box 767130, Roswell, GA 30076 to confirm reservation.

**What is the method and scheduling of the remaining balance?**

*3200 Euros per student The price in US \$ will be frozen at the exchange rate on the date when final balance is due. The exchange rate as of January 23, 2009 yielded a US \$ amount of \$4100*

The balance is due July 13 2009.

Because the balance due is to be calculated with the daily exchange rate as of July 13, 2009, you will need to recalculate the foreign currency exchange for the total of 3200 Euros into US Dollars and deduct the deposit to obtain the remaining balance.

This payment may be paid in the equivalent dollar amount by check or money order, payable to: Kippy Hammond, PO Box 767130, Roswell, GA 30076.

Any additional charges during your stay will be only upon your request and approval. This amount must be paid before departure from La Bonne Etoile.

Copies of paid invoices will be supplied on request. Please indicate the name you wish to be invoiced under if it is different from the name on your checks, [khstudios@yahoo.com](mailto:khstudios@yahoo.com)