

**An Encore performance**  
**Urania Christy Tarbet PSA – IAPS MC**  
**back at La Bonne Etoile 2010**  
**JUNE 22 – JULY 4, 2010**



*Calling all artists..*

*If you love light and luminous color..... buy a French dictionary and come fly with me to France to paint in your chosen media.*

*Give yourself the artistic experience of your life.*

*Paint in Monet's Garden, and the French countryside, and be inspired by the same beauty that inspired Monet to create beautiful paintings with a palette never before used...vibrant blues and emerald greens, and other luminous colors to dazzle the eye.*

*Who knows? If you are lucky, Monet himself may whisper a word of encouragement into your ear!*

Our headquarters will be La Bonne Etoile, a quaint country farmhouse filled with amenities to allow for a relaxed artist's retreat and a chance to enjoy the complete French experience.

Participants are pampered by our hosts Kippy Hammond and her husband Jerome Henriquez. Special French cuisine served in the courtyard and around an enormous family dining table, along with special restaurant outings will give you the beautiful flavors and unforgettable memories of true French hospitality.

Kippy will pamper you with her ability to make you feel totally at home at La Bonne Etoile; Jerome will share a bit of French history and culture. An experience at their table is unlike any you have previously experienced.

Visits from their French neighbors occur often as they periodically share their table with their wit and song. The French know how to enjoy life...come share the experience with us.

We will be painting in Monet's Garden, the countryside, and have unlimited studio time with French antiques at your disposal for painting brilliant still life works. Demonstrations in the a.m. allows for personal time at your own easel to explore your painting experience with light and color.

*Come fly away with me for a few weeks of creating and recreating as we live under "La Bonne Etoile....the good star."*

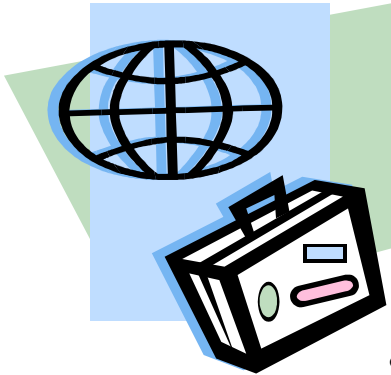
*Urania Christy Tarbet*

***P.S. Enroll early as the class is limited to 7 students to insure abundant attention, and one-on-one instruction.***

This year's workshop will begin at La Bonne Etoile and will wrap up with a painting excursion to Monet's Garden in Giverny. While at La Bonne Etoile mornings will be devoted to instruction and demonstrations by Urania Christy Tarbet. Afternoon and evenings will be loaded with painting, both in the studios and *en plein air* in the French countryside.

To enhance your workshop studies, the in-home and restaurant dinners, as well as all the excursions have been chosen to help you experience the local flavors of France that are not evident from a tour bus. This particular region of France, while a very big French tourism destination, isn't as highly visited by English speaking tourists, so, guides will be added to our group from time to time. The cities chosen are not so large that anyone who chooses to slip away and wander will not feel intimidated.

Whether you return to the states exhausted, having taken part in every class, excursion, and every extra minute in the studio or balance your stay with rest and relaxation as top priority, our hopes are that you leave La Bonne Etoile inspired. Inspired in your art and your spirit, having acquired new skills in creativity and foreign travel



The all-inclusive land package price of 3200 Euros covers the following:

- 12 nights of lodging, including 11 nights at La Bonne Etoile and one night in Giverny
- Meals, drinks, and gratuities, with the exception of lunch in Paris and lunch on brocante Sunday.
- Instructional sessions with Urania Christy Tarbet,
- Painting en plein air in Monet's Garden and the village of Giverny
- A host from La Bonne Etoile will accompany your group for the duration of your stay
- All ground transportation costs, including airport transfers, excursions
- Unlimited studio time
- En plein air excursions in the beautiful French countryside
- Internet access and access to laundry facilities.
- Much more....
- *This workshop may qualify for expansion to 14 days without an increase in price. Please wait until the enrollment numbers are verified before making flight arrangements.*

Supplies and air transportation not included.

Just a few of the highlights for your trip:

**Monet's Garden** *"It is necessary to go on a pilgrimage to Giverny, this sanctuary teeming with flowers, in order to understand the Master better, to grasp the sources of his inspiration and to imagine him still alive among us" (Gerald Van der Kemp, first curator of Claude Monet Foundation.)*

**Paris** - This one-day excursion is to try and give you a few bearings and "land legs" for future trips to Paris and not an all-inclusive visit. We will continue our "impressionistic journey" to the Musee D'Orsay or the Musee de L'Orangerie where we will view Monet's Les Nymphes.

**French cuisine** – Chef Marc Bost will be returning for the fourth year to make every meal a real treat during your stay.

**Brocantiing** *-During the summer months, France's countryside is filled with local festivals and small brocantes. These are a combination flea market/ garage sale/ festival with a mixture of local citizens and professional merchants.. This is a real treat that is always a hit with Americans though probably not on any tours.*

**Market Day** *-The weekly market in Bray-sur-Seine will be scheduled for those that would like to browse and take pictures. This particular market is a real treat, even for those familiar with European open-air markets.*

*Half day excursions to Provins, Troyes, Sens, Nogent sur Seine.....And much, much more.*

Arriving early or departing late is an option, room and board to be based on 110 Euros per day with special add-on excursions planned in response to individual requests and available time. Here are a few options to consider:

**Trip Price does NOT include:** Painting supplies except for banned liquids, airfare, airport transfers outside of scheduled trips for group, excess baggage fees, forwarding of baggage, baggage loss, charges for inoculations, medical expenses, travel insurance, museum admissions, optional trips, meals away from the group, special arrangements, and airport taxes.

**How do I make reservations? You may choose any of the following options**

- Go to [www.labonneetoile.com/tarbet](http://www.labonneetoile.com/tarbet) and follow the link to enroll
- You may email us at [Kristina@labonneetoile.com](mailto:Kristina@labonneetoile.com) to reserve you place.
- If you have questions, now or in the future, leave a message on our US Voicemail 770-216-1541 and you will be called back...leave your name, number and time to call. Don't forget to hame your time zone (Eastern Standard, Pacific Standard, etc)

A deposit of \$500.00 is due upon confirmation from La Bonne Etoile which can be paid with any of the following options.

**Payment Options:**

- Payments may be made by check or money order, payable to: Kippy Hammond, PO Box 767130, Roswell, GA 30076.
- All major credit cards and PayPal are accepted. There is a payment link to PayPal on the enrollment form on [www.labonneetoile.com/tarbet](http://www.labonneetoile.com/tarbet) where you can make a payment with any major credit card without having an account with PayPal, or you may pay with your PayPal account.
- International wiring information will be supplied upon request.

**Reservations and payment schedule:**

- To reserve a space and confirm your enrollment an initial payment of \$500.00 is due upon acceptance of this agreement.
- The second payment of \$1,000 is due within 30 days of initial enrollment.
- You will be invoiced for the balance of the trip costs and full payment is due within 60 days of arrival.
- All rates are quoted in Euros. The final payment, 60 days before arrival, will freeze the exchange rate for the agreement.
- To calculate final amount a simple formula can be used. ***Workshop price in Euros X Exchange Rate (on 60<sup>th</sup> day before arrival) LESS \$1500 from previous payments.*** *An example would be 3250 Euros X 1.43 (exchange rate as of 9/07/2009) = \$4647.50 Total.....LESS \$1500 deposit = \$3147.50 Balance owed.*
- ***PLEASE WAIT UNTIL THE WORKSHOP NUMBERS HAVE BEEN CONFIRMED BEFORE BOOKING YOUR FLIGHT. YOUR GROUP MAY QUALIFY FOR AN INCREASE OF WORKSHOP DAYS WITHOUT AN INCREASE IN COST.***