

## The Figure in Pastel

**May 29 – June 13, 2010**  
15 Day All-Inclusive Workshop  
One week sessions available  
May 29 – June 5 or June 6 – June 13



## The Figure in Pastel with Margaret Dyer

**May 29 – June 13, 2010**

15 Day All-Inclusive Workshop

One week sessions available

May 29 – June 5 or June 6 – June 13

The class is limited to 7 students

**Price 3200 Euros for full 2 week session**

**Price 1700 Euros for one week session**

**May 29** – Arrival and Orientation

**May 30, 31, June 1** - Instruction, 2 sessions per day, 3 hours each with model

**June 2** - Paris

**June 3, 4** - Instruction from photos Final Critique, pack, vernissage

**June 5 Departure of one week session** - Rest day, local excursions for 15 Day Students

**June 6 Arrival for second one week session** - Market and brocating day for 15 Day Students

**June 7, 8, 9** - Instruction, 2 sessions per day, 3 hours each with model

**June 10** - Paris

**June 11, 12** Instruction, 2 sessions per day, 3 hours each working from photos Final Critique, pack, vernissage

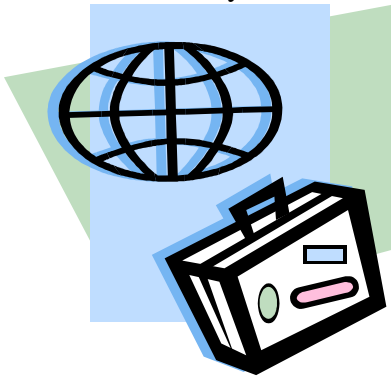
**June 13** – Departure

*Scheduled sessions will be a combination of morning, afternoon, and evening hours to accommodate sightseeing and cultural excursions.*

Margaret is a Master Pastelist with the Pastel Society of America. She has been featured in The Artists Magazine, American Artist, International Artist, Pastel Artist International, The Pastel Journal, "How Did You Paint That?-100 Ways to Paint People & Figures, Vols. 1 and 2", and "Pure Color: The Best of Pastels". [www.margaretdyer.com](http://www.margaretdyer.com)

To enhance your workshop studies, the in-home and restaurant dinners, as well as all the excursions have been chosen to help you experience the local flavors of France that are not evident from a tour bus. This particular region of France, while a very big French tourism destination, isn't as highly visited by English speaking tourists, so, guides will be added to our group from time to time. The cities chosen are not so large that anyone who chooses to slip away and wander will not feel intimidated.

Whether you return to the states exhausted, having taken part in every class, excursion, and every extra minute in the studio or balance your stay with rest and relaxation as top priority, our hopes are that you leave La Bonne Etoile inspired. Inspired in your art and your spirit, having acquired new skills in creativity and foreign travel



The all-inclusive land package price of 3200 (1700) Euros covers the following:

- 15 (7) nights of lodging
- Meals, drinks, and gratuities, with the exception of lunch in Paris and lunch on brocante Sunday.
- All instructional sessions with Margaret Dyer
- A host from La Bonne Etoile will accompany your group for the duration of your stay
- All ground transportation costs, including airport transfers, excursions
- Unlimited studio time
- En plein air excursions in the beautiful French countryside
- Internet access and access to laundry facilities.
- All model fees
- Much more....

Supplies and air transportation not included.

Just a few of the highlights for your trip:

**Paris** - This one-day excursion is to try and give you a few bearings and “land legs” for future trips to Paris. A visit to the Musee d’Orsay is always a highlight as is just walking the streets of the most beautiful city on the world.

**Provins** - *The ancient fortified city of Provins sits atop a ridge overlooking the Seine valley and the Champagne chalklands, roughly equidistant from both Paris and Troyes. The town has a famous outline, dominated by a tower and the dome of Eglise St-Quiriace. Provins’*

*role as an important center of commerce was confirmed in the 12C when it became one of the two capitals of the County of Champagne.*

**Troyes** - *is a charming, medieval city. We will begin the day with a guided walking tour with an English-speaking tour guide. You have a choice to explore the numerous museums and churches in the ancient city or to sketch within helping distance of the instructor.*

**Sens** - *This rather small town was important well before Caesar came to Gaul. The Cathedral St-Etienne is Sens' outstanding glory. Begun before 1140 it is the oldest of the great Gothic cathedrals and the attached museum houses the most outstanding Gallo-Roman collection in France.*

**French cuisine** – Chef Marc Bost will be returning for the fifth, year to make every meal a real treat during your stay.

**Brocantiing** -*During the summer months, France's countryside is filled with local festivals and small brocantes. These are a combination flea market/ garage sale/ festival with a mixture of local citizens and professional merchants. Going to the brocantes every weekend seems to be a French tradition; you will see Parisians out for the weekend and locals, all looking for the treasures to be found. This is a real treat that is always a hit with Americans though probably not on any tours.*

**Market Day** -*The weekly market in Bray-sur-Seine will be scheduled for those that would like to browse and take pictures. This particular market is a real treat, even for those familiar with European open-air markets.*

*Daily excursions will be planned around the class schedule and will include Provins, Sens, Troyes, Nogent sur Seine, and much, much more.*

*Please feel free to visit our website [www.labonneetoile.com](http://www.labonneetoile.com) and the director's personal website [www.kippyhammond.com](http://www.kippyhammond.com) to get a great sense of the adventure that we are planning for you.*

**Price is based on double occupancy. The quoted amount is in Euros, US \$ amount will be frozen at the exchange rate on the date when final balance is due. Expenses for one week sessions in parenthesis.**

**Trip Price does NOT include:** Painting supplies except for banned liquids, airfare, airport transfers outside of scheduled trips for group, excess baggage fees, forwarding of baggage, baggage loss, charges for inoculations, medical expenses, travel insurance, museum admissions, optional trips, meals away from the group, special arrangements, and airport taxes.

Arriving early or departing late is an option, room and board to be based on availability. The tariff is 110 Euros per day with special add-on excursions available in response to individual requests and available time.

## How do I confirm a space in the workshop?

1. Download and complete the enrollment form at the following web address:  
<http://www.labonneetoile.com/workshops/2010DYERartistpage.htm>
2. Email completed form to [Kristina@labonneetoile.com](mailto:Kristina@labonneetoile.com) or fax to 1-770-216-1541.
3. To confirm your enrollment a deposit of \$500.00 (\$300 for one week sessions) can be made in the following ways:
  - CHECK OR MONEY ORDER Payments may be made by check or money order, payable to: Kippy Hammond, PO Box 767130, Roswell, GA 30076.
  - MAJOR CREDIT CARDS or PAYPAL are accepted. Click on the BuyNow button on <http://www.labonneetoile.com/workshops/2010DYERartistpage.htm> which will take you to PayPal. You do not need an account to use this service; you will have the opportunity to choose to pay by any major credit card. This only takes a few minutes and you are finished.

Do not hesitate to request assistance...we are here to help. [kristina@labonneetoile.com](mailto:kristina@labonneetoile.com)

## Reservations and payment schedule:

- To reserve a space and confirm your enrollment an initial payment of \$500.00 (\$300.00 for one week sessions) is due within five days of your initial email request.
- The second payment of \$1,000 (\$550 for one week session) is due within 30 days of initial enrollment.
- You will be invoiced for the balance of the trip costs and full payment is due within 60 days of arrival.
- All rates are quoted in Euros. The final payment, 60 days before arrival, will freeze the exchange rate for the agreement.
- To calculate final amount a simple formula can be used. **Workshop price in Euros X Exchange Rate (on 60<sup>th</sup> day before arrival) LESS \$1500 from previous payments.** An example would be 3250 Euros X 1.43 (exchange rate as of 9/07/2009) = \$4647.50 Total.....LESS \$1500 deposit = \$3147.50 Balance owed.

*PLEASE WAIT UNTIL THE WORKSHOP NUMBERS HAVE BEEN CONFIRMED BEFORE BOOKING YOUR FLIGHT.*

**WE LOOK FORWARD TO HAVING YOU WITH US!!**